

Pixie – Manual Hydraulic Pellet Press



The comprehensive Pixie Package provides all necessary components to start making pellets in the lab. It includes a 7-mm die, two extra pellet collars, pellet holder, pestle and mortar set, KBr powder and spatula. All die components are made of hardened stainless steel and the parallel surfaces that come in contact with the sample are highly polished for obtaining optimal pellet quality.

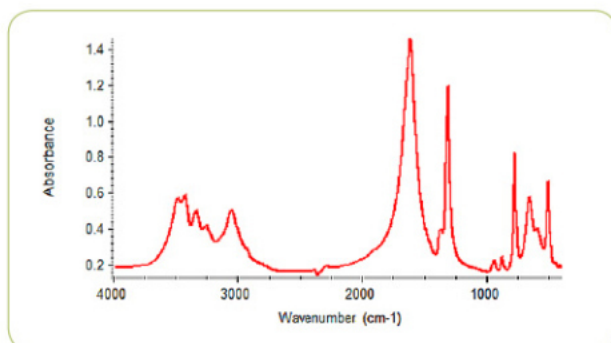


FEATURES

- 7-mm diameter die
- Applied force up to 2.5 tons
- Integrated force gauge
- Easy-to-use, ergonomic design
- Small footprint

PIKE Technologies introduces Pixie, a portable hydraulic press for making high-quality KBr pellets. With the press' ergonomic design, pellet making is easy and effortless. Pixie's small footprint makes it ideal for limited bench-space environments and glove boxes, and for storability. KBr pellets for IR transmission measurements are required by a number of standardized procedures, including some USPL and ASTM methods. Advantages of pellet making are spectral reproducibility and the ability to deal with relatively difficult or limited-mass samples.

The pellet preparation involves loading of the powdered KBr/ sample matrix into the die chamber and placing the assembled die onto the platform of the hydraulic press. Force up to 2.5 tons may be applied. The die collar containing the newly formed pellet is placed into the designated holder and is positioned in the spectrometer's 2 x 3" slide mount holder for measurement.



Spectrum of calciumoxalate hydrate; KBr pellet made with Pixie Press.

SPECIFICATIONS

	Metric	English
Ram Force, max	2.3 metric tons	2.5 tons
Platen Diameter	20.2 mm	0.8"
Die Height Range	22–39 mm	0.86–1.54"
Maximum Die Width	79 mm	3.11"
Mass	4.5 kg	10 lbs
Dimensions (W x D x H)		
Metric	127 x 192 x 201 (min.) mm	
English	5.0 x 7.8 x 7.9 (min.)"	

ORDERING INFORMATION

PART NUMBER	DESCRIPTION
181-1410	Pixie Hydraulic Press Package <i>Includes Pixie Hydraulic Press, 7-mm die set with two additional die collars, pellet holder, 35-mm agate mortar, KBr (50 g) and spoon spatula</i>
162-1010	Premium Transmission Sampling Kit <i>Includes Pixie hydraulic pellet press, sample preparation tools, mull liquids, cells, windows and cell holders required for preparation and analysis of solid and liquid samples</i>
181-1400	Pixie Hydraulic Press

OPTIONS AND REPLACEMENT PARTS

PART NUMBER	DESCRIPTION
161-1010	7-mm Die Set
161-1018	Single Pellet Holder for 7-mm pellets
161-1011	7-mm Collar
160-8010	KBr Powder, 100 g
161-5035	Agate Mortar and Pestle, 35 mm
042-3035	Spatula, spoon style
042-3050	Spatula, flat style